

MDMS Video Link:
<http://vimeo.com/26917171>
Password: 6354MDMS



**Energy Huntsville Forum & Green
University Awards Luncheon
Thursday, August 25th**

CALIBRE Energy Management and Army Meter Data Management Systems (MDMS)

**Cecil Jones, CALIBRE
Principal Analyst, Energy**

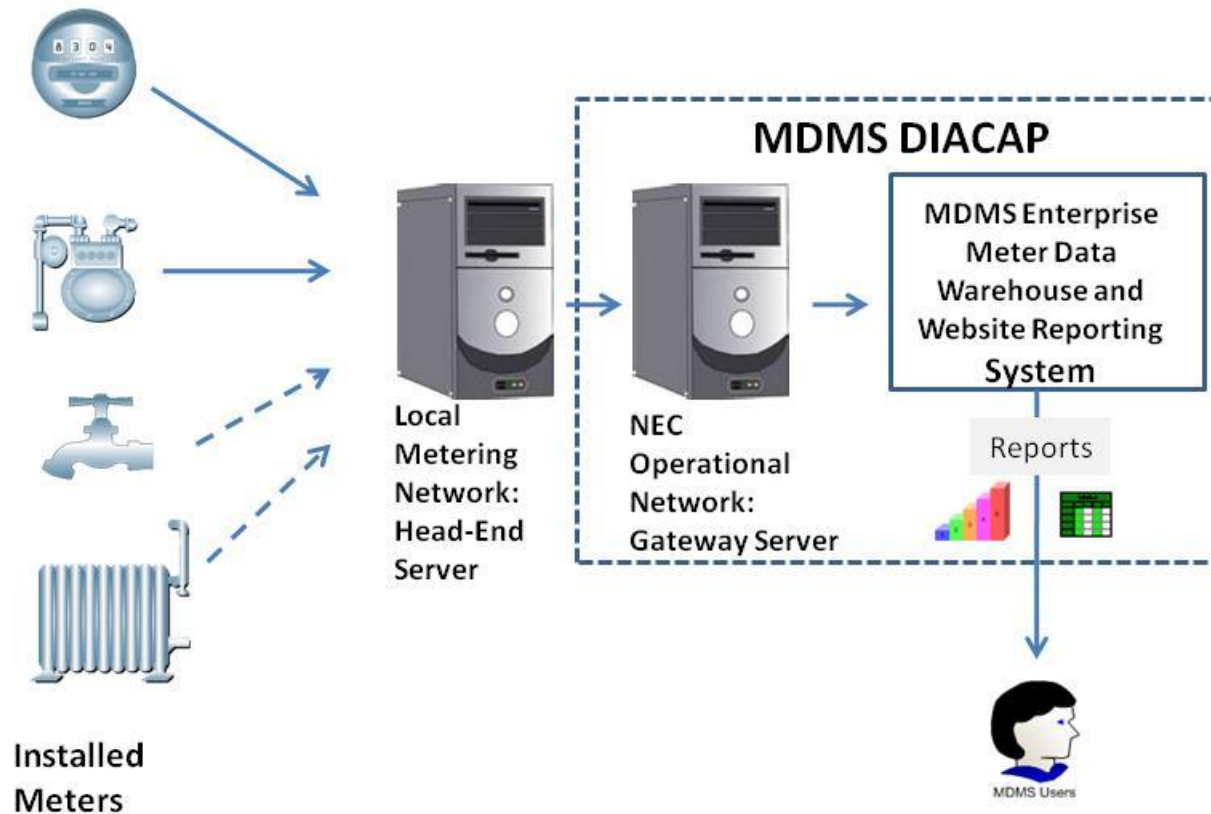
Energy Managers Have It Tough!



MDMS – What is it?

MDMS – The US Army's Meter Data Management System is a secure (DIACAP approved) system for collecting and analyzing metered energy data at installations and presents the information in a graphical (web accessed) Dashboard to enable rapid identification and response to energy related situations.

MDMS Information Flow



Reasons for Army MDMS

- Energy security, sustainability, and efficiency are core areas of interest for the Army
- U.S. Army has a large number of installations
- Many different types of EMCSs with different reporting capabilities
- No centralized energy usage data repository
- No simple way to prepare aggregated reports
- Must meet the requirements of EPAAct of 2005

Comprehensive Enterprise Solution

- Comprehensive energy data collection and reporting system
- Secure data transfer between all points
- Not platform or vendor specific
- Ability to pull data from a number of EMCSs
- High performance enterprise data aggregation and reporting

Overview : BIX-MDMS x

calmdmstest:8080/overview_pages/new

Welcome guest

Contact Tutorial Help Logout

MDMS METER DATA MANAGEMENT SYSTEM

powered by CALIBRE

1. SELECT THE ORGANIZATIONAL LEVEL YOU WANT TO DRILL DOWN TO

Required Input

HQDA > IMCOM > All

Warning: You can only see the organizational structure as high up as your access profile allows. Users who have access to more than one region level or above may navigate downward to multiple installations and view the assets of each installation. The system will display dashboard information relative to your drill-down selection.

For example: If you select down to a specific installation (i.e. garrison), then your dashboard will show information for the facilities within the selected garrison. If, on the other hand, you selected down only to the region level, then your dashboard will show information for the facilities in all the garrisons within the selected region.

2. SELECT WHAT YOU WANT TO SEE CONSUMPTION INFORMATION FOR

Optional Input

SEARCH with auto-complete

Dining

Select all

Facility Group	Facility List	Facilities Selected
	<input type="checkbox"/> 756 ENLISTED UPH	
	<input type="checkbox"/> 603 OFF OPEN DINING	
	<input type="checkbox"/> 9100 CSMS/MATES	
	<input type="checkbox"/> 1444 DINING FACILITY	

System Approach

- Distributed system with gateway servers hosted at Army installations
- Energy meter data is aggregated and transferred to the Enterprise data warehouse
- Standard and ad hoc reports available to installation and HQ personnel

The screenshot shows a web browser window titled "Overview : BIX-MDMS x" with the URL "calmdmstest:8080/overview_pages/new". The interface is divided into two main sections: "3. SELECT THE COMMODITIES YOU WANT TO SEE" and "4. SELECT THE TIME RANGE".

Section 3: SELECT THE COMMODITIES YOU WANT TO SEE

- Required Input:** A lightbulb icon.
- Energy-Specific Consumption (shown in MMBTUs):**
 - Select all energy
 - Electrical
 - Gas
 - Steam
 - Heating Oil
 - Propane
 - Renewables
- Non-Energy-Specific Consumption (shown in kGals):**
 - Select all available commodities
 - Select all non-energy
 - Potable Water
 - Gray Water
- Normalize energy-specific results for weather

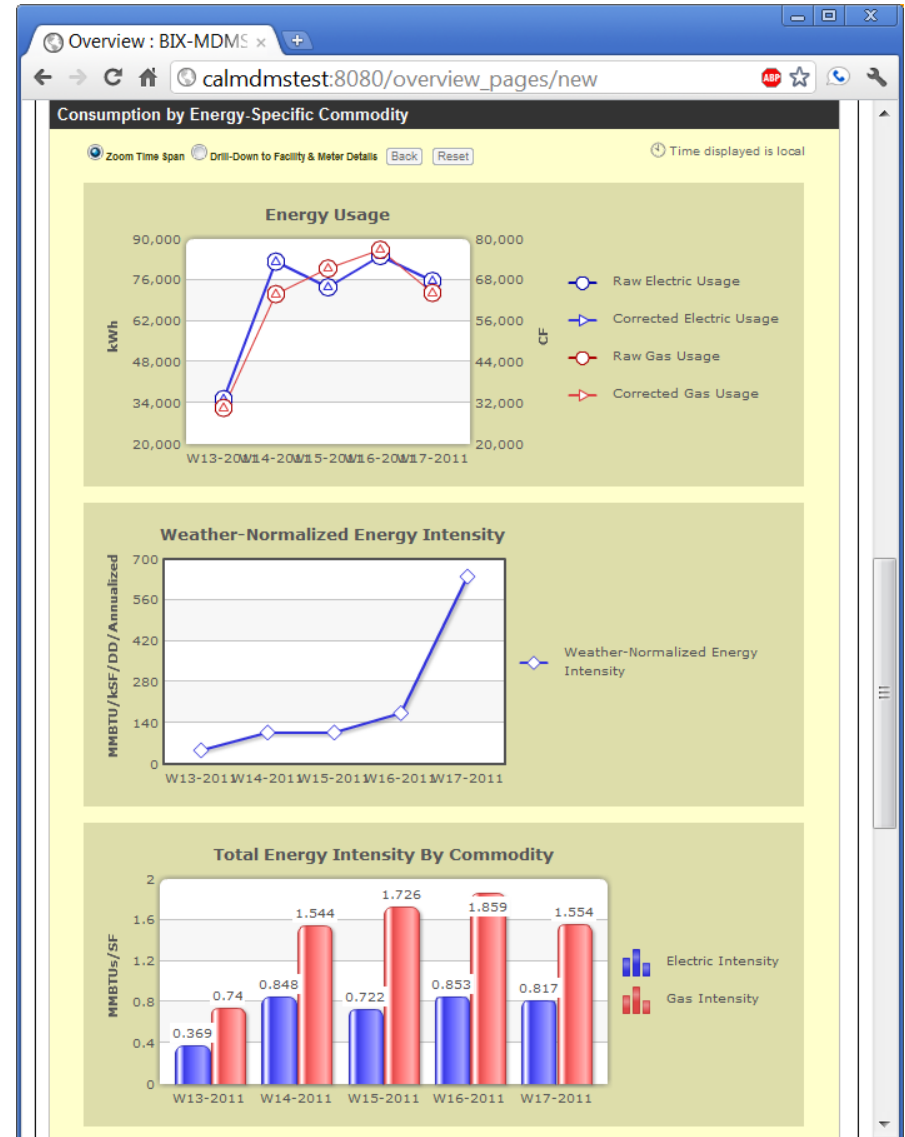
Section 4: SELECT THE TIME RANGE

- Required Input:** A digital clock icon.
- Date Range:**
 - From: 03/01/2011
 - To: 03/31/2011
- Month to Date:**
 - Default: Last 31 days (excluding the current day for weather normalization, as normalization requires the completion of a 24-hour day)
- Entire Day:** Selected.
- Hourly Range:**
 - From: []
 - To: []
- Intra-day ranges cannot be normalized for weather, as normalization requires the full 24-hour span of a day.**

At the bottom of the interface, there is a "DASHBOARD CONTROLS" section with a row of navigation arrows and a "SHOW RESULTS" button.

Reports

- Energy usage
- Weather-normalized energy intensity
- Total energy intensity by commodity
- Combined energy intensity
- Total energy consumption by commodity
- Combined energy consumption
- Reports can be drilled down
- Export to Microsoft Excel



Map View

- Map integration
- Support for:
 - Electric
 - Gas
 - Steam
 - Water
 - Renewables
- Usage intensity

Map View of Facilities with Corresponding Meters



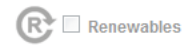
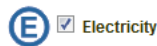
Display meter information in map:

<input checked="" type="checkbox"/> Electricity	<input checked="" type="checkbox"/> Gas	<input type="checkbox"/> Steam	<input type="checkbox"/> Water	<input type="checkbox"/> Renewables
<input type="checkbox"/> Electrical Intensity	<input type="checkbox"/> Gas Intensity	<input type="checkbox"/> Steam Intensity	<input type="checkbox"/> Water Intensity	<input type="checkbox"/> Renewables Intensity

Meter Detail

- Detailed searchable meter information:
 - Name
 - Status
 - Location
 - Hardware
 - Network info
 - History
 - Billing
- Export to Microsoft Excel

Display meter information in table:



Meter Details

Click on column headings to sort the table 🕒 All times displayed are local to the meter reading

Meter ID	Meter Name	Commodity Type	Meter Profile	View in Map	Timestamp	Facility List	Meter SF	Raw
48	FCA1_JACE01_0065E9100Shark200	Ⓞ	🔍	➡	04-01-2011 00:01:7	9100 CSMS/MATES	69,345	44
48	FCA1_JACE01_0065E9100Shark200	Ⓞ	🔍	➡	04-01-2011 00:16:7	9100 CSMS/MATES	69,345	44
48	FCA1_JACE01_0065E9100Shark200	Ⓞ	🔍	➡	04-01-2011 00:31:9	9100 CSMS/MATES	69,345	44
48	FCA1_JACE01_0065E9100Shark200	Ⓞ	🔍	➡	04-01-2011 00:46:7	9100 CSMS/MATES	69,345	44
48	FCA1_JACE01_0065E9100Shark200	Ⓞ	🔍	➡	04-01-2011 01:01:25	9100 CSMS/MATES	69,345	44
48	FCA1_JACE01_0065E9100Shark200	Ⓞ	🔍	➡	04-01-2011 01:16:8	9100 CSMS/MATES	69,345	44
48	FCA1_JACE01_0065E9100Shark200	Ⓞ	🔍	➡	04-01-2011 01:31:7	9100 CSMS/MATES	69,345	44
48	FCA1_JACE01_0065E9100Shark200	Ⓞ	🔍	➡	04-01-2011 01:46:5	9100 CSMS/MATES	69,345	44
48	FCA1_JACE01_0065E9100Shark200	Ⓞ	🔍	➡	04-01-2011 02:01:5	9100 CSMS/MATES	69,345	44
48	FCA1_JACE01_0065E9100Shark200	Ⓞ	🔍	➡	04-01-2011 02:16:5	9100 CSMS/MATES	69,345	44
48	FCA1_JACE01_0065E9100Shark200	Ⓞ	🔍	➡	04-01-2011 02:31:13	9100 CSMS/MATES	69,345	44
48	FCA1_JACE01_0065E9100Shark200	Ⓞ	🔍	➡	04-01-2011 02:46:26	9100 CSMS/MATES	69,345	44
48	FCA1_JACE01_0065E9100Shark200	Ⓞ	🔍	➡	04-01-2011 03:01:8	9100 CSMS/MATES	69,345	44
48	FCA1_JACE01_0065E9100Shark200	Ⓞ	🔍	➡	04-01-2011 03:16:7	9100 CSMS/MATES	69,345	44
48	FCA1_JACE01_0065E9100Shark200	Ⓞ	🔍	➡	04-01-2011 03:31:8	9100 CSMS/MATES	69,345	44
48	FCA1_JACE01_0065E9100Shark200	Ⓞ	🔍	➡	04-01-2011 03:46:6	9100 CSMS/MATES	69,345	44
48	FCA1_JACE01_0065E9100Shark200	Ⓞ	🔍	➡	04-01-2011 04:01:0	9100 CSMS/MATES	69,345	44

Page 1 of 941 | 25 | View 1 - 24 of 23,519



US Army Engineering and Support Center, Huntsville (CEHNC)

John Trudell, MDMS Program Manager

Email: John.A.Trudelliii@usace.army.mil

Phone: (256) 895-1322

CALIBRE

Heather Black, MDMS Project Manager

Email: heather.black@calibresys.com

Phone: (256) 217-1678